

Packing Dimensions:400(D)x300(W)x430(H)mm

Net Weight: 11kg

Gross Weight:12kg



11. Maintenance and Cleaning

The following points have to be considered during the inspection:

- 1) All screws for installing the devices or parts of the device have to be tightly connected and must not be corroded.
- 2) There must not be any deformations on the housing, color lenses, fixations and installation spots (ceiling, suspension, trussing).
- 3) Mechanically moved parts must not show any traces of wearing and must not rotate with unbalances.
- 4) The electric power supply cables must not show any damage, material fatigue or sediments.

Further instructions depending on the installation spot and usage have to be adhered by a skilled installer and any safety problems have to be removed.



CAUTION!

Disconnect from mains before starting maintenance operation.

In order to make the lights in good condition and extend the life time, we suggest a regular cleaning to the lights.

- 1) Clean the inside and outside lens each week to avoid the weakness of the lights due to accumulation of dust.
- 2) Clean the fan each week.
- 3) A detailed electric check by approved electrical engineer each three month, make sure that the circuit contacts are in good condition, prevent the poor contact of circuit from overheating.

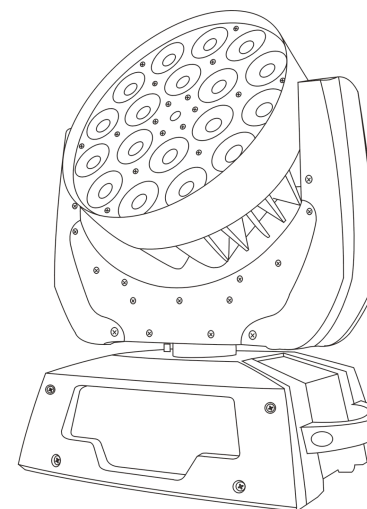
We recommend a frequent cleaning of the device. Please use a moist, lint- free cloth. Never use alcohol or solvents.

There are no serviceable parts inside the device. Please refer to the instructions under “Installation instructions” .

Should you need any spare parts, please order genuine parts from your local dealer.

LEDZOOM 180

SI-059



User Manual

KEEP THIS MANUAL FOR FUTURE NEEDS

1. Unpacking

Thank you for choosing Color Imagination's LEDZOOM 180. For your own safety, please read this manual before installing the device. This manual covers the important information on installation and applications. Please install and operate the fixture with following instructions. Meanwhile, please keep this manual well for future needs.

Color Imagination's LEDZOOM 180 is made of a new type of high temperature strength of engineering plastics and cast aluminum casing with nice outlook. The fixture is designed and manufactured strictly following CE standards, complying with international standard DMX512 protocol. It's available independently controlled and linkable with each other for operation. And it is applicable for large-scale live performances, theater, studio, nightclubs and discos.

SI-059 adopts 18PCS CREE 10W 4-in-1 LED lamps which features high brightness and stability. Please carefully unpack it when you receive the fixture and check whether it is damaged during the transportation. And please check whether the following items are included inside the box:

Moving Head----- One	Signal Cable----One
Omega Clamp-----One	User Manual----One
Power Cable-----One	Safety Chain----One

9. Features

- 18PCS 10W CREE XLamp MC-E (4-in-1 LEDs)
- LEDs in 3 sections (6 LEDs in one section), controllable individually
- Specific optic system of highly efficient elements
- Linear zoom from 10° to 50°
- High light output with 1963LUX(10°) and 229LUX(50°) @5M at full RGBW
- 50,000 hours lifespan and low power consumption
- Amazing RGBW color mixing
- A virtual gobo wheel with 9 changing and rotating gobos
- High efficiency LED shutter with variable speed
- Smooth LED dimmer
- LED rainbow effect
- 8 built-in default programs with Macros effect
- Strobe effect with 18 flashes per second and pulse effect
- General dimming and blackout for all four colors
- 13 and 27 DMX channels switchable from the operation menu
- Available for design DMX mode
- DMX512, master-slave and sound activated controllable or auto operation
- Blue LCD display
- Lower noise and efficient FAN cooling system
- Powercon IN/ OUT
- 45° C max ambient temperature
- IP20 protection rating
- 55dB at 3' dB rating
- 3-pin DMX connectors

10. Technical Specifications

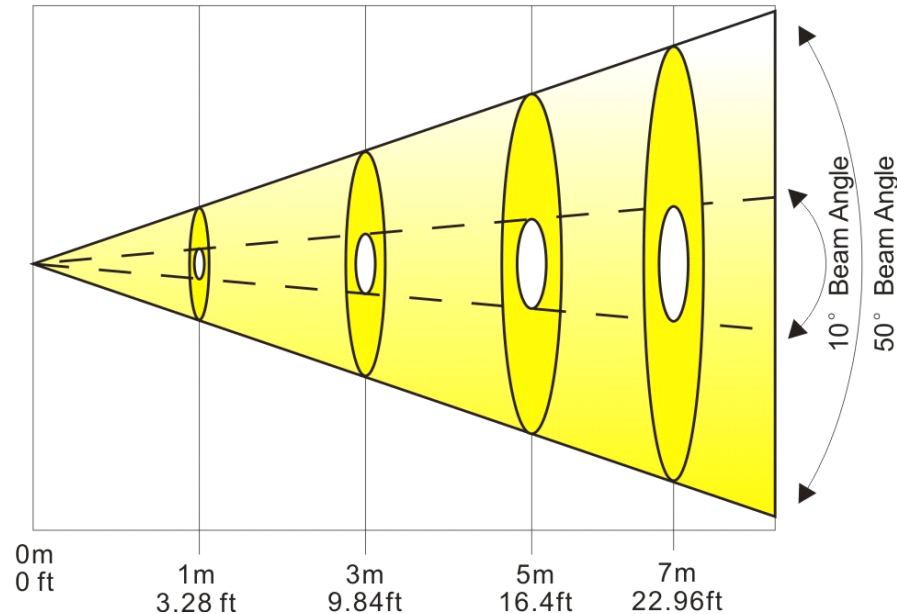
- Input Voltage: AC90-260V 50-60Hz
- LED Quantities: 18PCS 10W CREE XLamp MC-E LEDs(RGBW in one)
- Control Signal: DMX512, master-slave and sound activated or auto operation
- Control Channel: 13/27/27 DMX Channels
- Power Consumption: 197W
- Dimensions:350(D)x260(W)x350(H)mm

8. Photometric Data

Photometric Beam Angle Data

10° ~ 50° Beam Angle LUX x 0.0929=FC

R	858FC / 9243LUX 115FC / 1236LUX	153FC / 1647LUX 12FC / 121LUX	57FC / 610LUX 6FC / 59LUX	30FC / 315LUX
G	760FC / 8177LUX 125FC / 1341LUX	129FC / 1380LUX 14FC / 143LUX	52FC / 559LUX 7FC / 67LUX	29FC / 305LUX
B	1137FC / 12233LUX 242FC / 2597LUX	221FC / 2379LUX 24FC / 255LUX	81FC / 873LUX 10FC / 99LUX	43FC / 457LUX
W	1263FC / 13585LUX 188FC / 2017LUX	261FC / 2808LUX 20FC / 207LUX	94FC / 1006LUX 8FC / 87LUX	46FC / 497LUX
RGBW	2802FC / 30160LUX 585FC / 6292LUX	495FC / 5330LUX 58FC / 622LUX	183FC / 1963LUX 22FC / 229LUX	94FC / 1009LUX



2. Safety Instructions



CAUTION!
Be careful with your operations. With a dangerous voltage you can suffer a dangerous electric shock when touching wires!

This device has left the factory in perfect condition. In order to maintain this condition and to ensure a safe operation, it is absolutely necessary for the user to follow the safety instructions and warning notes written in this user manual.



Important:

Damages caused by the disregard of this user manual are not subject to warranty. The dealer will not accept liability for any resulting defects or problems.

If the device has been exposed to temperature changes due to environmental changes, do not switch it on immediately. The arising condensation could damage the device. Leave the device switched off until it has reached room temperature.

This device falls under protection-class I. Therefore it is essential that the device be earthed.

The electric connection must carry out by qualified person.

The device shall only be used with rate voltage and frequency.

Make sure that the available voltage is not higher than stated at the end of this manual.

Make sure the power cord is never crimped or damaged by sharp edges. If this would be the case, replacement of the cable must be done by an authorized dealer.

Always disconnect from the mains, when the device is not in use or before cleaning it. Only handle the power cord by the plug. Never pull out the plug by tugging the power cord.

During initial start-up some smoke or smell may arise. This is a normal process and does not necessarily mean that the device is defective, it should decrease gradually.

Please don't project the beam onto combustible substances.

Fixtures cannot be installed on combustible substances, keep more than 50cm distance with wall for smooth air flow, so there should be no shelter for fans and ventilation for heat radiation.

If the external flexible cable or cord of this luminaire is damaged, it shall be exclusively replaced by the manufacturer or his service agent or a similar qualified person in order to avoid a hazard.

3. Operation Instructions

- The moving head is an LED WASH with ZOOM for on-site decoration purpose.
- Don't turn on the fixture if it's been through severe temperature difference like after transportation because it might damage the light due to the environment changes. So make sure to operate the fixture until it is in normal temperature.
- This light should be keep away from strong shaking during any transportation or movement.
- Don't pull up the light by only the head, or it might cause damages to the mechanical parts.
- Don't expose the fixture in overheat, moisture or environment with too much dust when installing it. And don't lay any power cables on the floor. Or it might cause electronic shock to the people.
- Make sure the installation place is in good safety condition before installing the fixture.
- Make sure to put the safety chain and check whether the screws are screwed properly when installing the fixture.
- Make sure the lens are in good condition. It's recommended to replace the units if there are any damages or severe scratch.
- Make sure the fixture is operated by qualified personnel who knows the fixture before using.
- Keep the original packages if any second shipment is needed.
- Don't try to change the fixtures without any instruction by the manufacturer or the appointed repairing agencies.
- It is not in warranty range if there are any malfunctions from not following the user manual to operate or any illegal operation, like shock short circuit, electronic shock, lamp broke, etc.

4. Mounting and Installation

Cautions: For added protection mount the fixtures in areas outside walking paths, seating areas, or in areas where the fixture might be reached by unauthorized personnel.

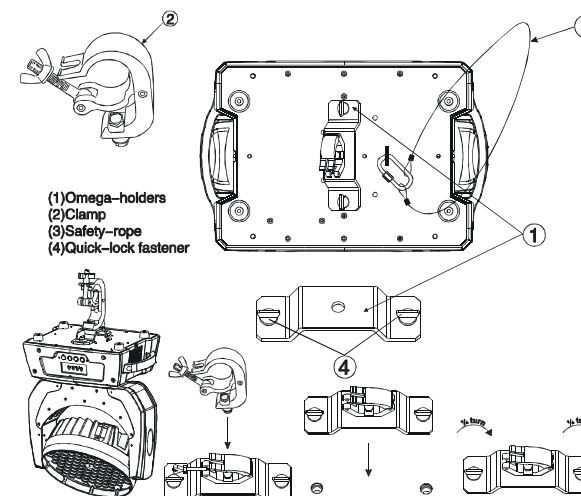
Before mounting the fixture to any surface, make sure that the installation area can hold a minimum point load of 10 times the device's weight. Fixture installation must always be secured with a secondary safety attachment, such as an appropriate safety cable.

Never stand directly below the device when mounting, removing, or servicing the fixture.

				236-245	Blackout by all wheel changing
				246-255	No function
15	13	15	Special	0-019	No function
				020-029	No function
				030-039	No function
				040-079	No function
				080-099	Motor reset
				100-119	Internal program 1
				120-139	Internal program 2
				140-159	Internal program 3
				160-179	Internal program 4
				180-199	Internal program 5
				200-219	Internal program 6
				220-239	Internal program 7
				240-255	Internal program 8
16		16	Red	0-255	Red in A section 0-100%
17		17	Green	0-255	Green in A section 0-100%
18		18	Blue	0-255	Blue in A section 0-100%
19		19	White	0-255	White in A section 0-100%
20		20	Red	0-255	Red in B section 0-100%
21		21	Green	0-255	Green in B section 0-100%
22		22	Blue	0-255	Blue in B section 0-100%
23		23	White	0-255	White in B section 0-100%
24		24	Red	0-255	Red in C section 0-100%
25		25	Green	0-255	Green in C section 0-100%
26		26	Blue	0-255	Blue in C section 0-100%
27		27	White	0-255	White in C section 0-100%

7. DMX Channels

Channel			Function	Value	Description
16B	8B	DE			
1	1	1	PAN	0-255	PAN movement
2		2	PAN Fine	0-255	Fine control of PAN movement
3	2	3	TILT	0-255	TILT movement
4		4	TILT Fine	0-255	Fine control of TILT movement
5	3	5	Dimmer	0-255	Dimmer 0%...100%
6	4	6	Shutter	0-009	No Function
				010-249	Strobe effect from slow to fast
				250-255	No Function
7	5	7	Red	0-255	0-100% Red dimmer from dark to bright
8	6	8	Green	0-255	0-100% Green dimmer from dark to bright
9	7	9	Blue	0-255	0-100% Blue dimmer from dark to bright
10	8	10	White	0-255	0-100% White dimmer from dark to bright
11	9	11	Virtual Gobo Wheel	0-019	No Function
				020-039	Virtual Gobo 1
				040-059	Virtual Gobo 2
				060-079	Virtual Gobo 3
				080-099	Virtual Gobo 4
				100-119	Virtual Gobo 5
				120-139	Virtual Gobo 6
				140-159	Virtual Gobo 7
				160-179	Virtual Gobo 8
				180-255	Virtual Gobo 9
12	10	12	Virtual Gobo rotation	0-124	Forwards(CW) rotation from slow to fast
				125-130	STOP ROTATION
				131-255	Backwards(CCW) rotation from slow to fast
13	11	13	Zoom	0-255	In(near) to out(far) 10° to 50°
14	12	14	Speed	0-225	Max to min speed for PAN/TILT
				226-235	Blackout by movement



from a ceiling, or set on a flat level surface (see illustration below). Be sure this fixture is kept at least 0.5m (1.5 ft) away from any flammable materials (decoration etc.).

Always use and install the supplied safety cable as a safety measure to prevent accidental damage and/or injury in the event the clamp fails.

Mounting points: Overhead mounting requires extensive experience, including amongst others calculating working load limits, a fine knowledge of the installation material being used, and periodic safety inspection of all installation material and the fixture. If you lack these qualifications, do not attempt the installation yourself. Improper installation can result in bodily injury.

Be sure to complete all rigging and installation procedures before connecting the main power cord to the appropriate wall outlet.

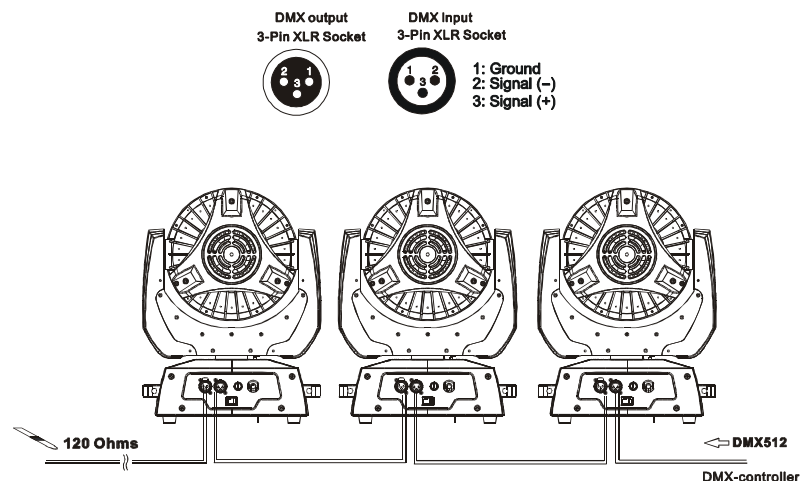
Clamp Mounting: The LEDZOOM 180 provides a unique mounting bracket assembly that integrates the bottom of the base, the included "Omega Bracket," and the safety cable rigging point in one unit (see the illustration below). When mounting this fixture to truss be sure to secure an appropriately rated clamp to the included omega bracket using a M10 screw fitted through the center hole of the "omega bracket". As an added safety measure be sure to attached at least one properly rated safety cable to the fixture using on of the safety cable rigging point integrated in the base assembly

Regardless of the rigging option you choose for your LEDZOOM 180, always be sure to secure your fixture with a safety cable. The fixture provides a built-in rigging point for a safety cable on the hanging bracket as illustrated above. Be sure to only use the designated rigging point for the safety cable and never secure a safety cable to a carrying handle.

5. DMX-512 control connections

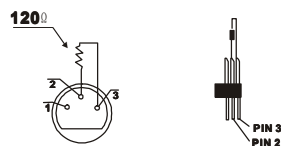
Connect the provided XLR cable to the female 3-pin XLR output of your controller and the other side to the male 3-pin XLR input of the moving head. You can chain multiple

Moving head together through serial linking. The cable needed should be two core, screened cable with XLR input and output connectors. Please refer to the diagram below.



DMX-512 connection with DMX terminator

For installations where the DMX cable has to run a long distance or is in an electrically noisy environment, such as in a discotheque, it is recommended to use a DMX terminator. This helps in preventing corruption of the digital control signal by electrical noise. The DMX terminator is simply an XLR plug with a 120 Ω resistor connected between pins 2 and 3, which is then plugged into the output XLR socket of the last fixture in the chain. Please see illustrations below.



6. Menu Operations

Function Mode	DMX Address	A001~AXXX		
	Set to slave			
	Auto Run	Internal Program1~8		Master/Alone
	Music Control	Internal Program1~8		Master/Alone
Reset	On/Off			
Reverse Pan	On/Off			
Reverse Tilt	On/Off			
Mic sensitivity	0-99%			
Special	Reset Default	On/Off		
	Calibration	Code: 088		
		PAN, TILT		
	Temperature	XXX°C/°F		
	Manual Control	PAN=XXX.....		
Edit Program	Auto	Steps(1..48)		
	Program1	Scenes 01	PAN=XXX...	
	
	Program8	Scenes XX	Time=xx.xS	
Mode of channel	Mode Set	16Bit Mode 8Bit Mode Design Mode		
	Design Mode Set	Max CH= XX PAN = 001 ..		
Version	V1.0~V9.9			